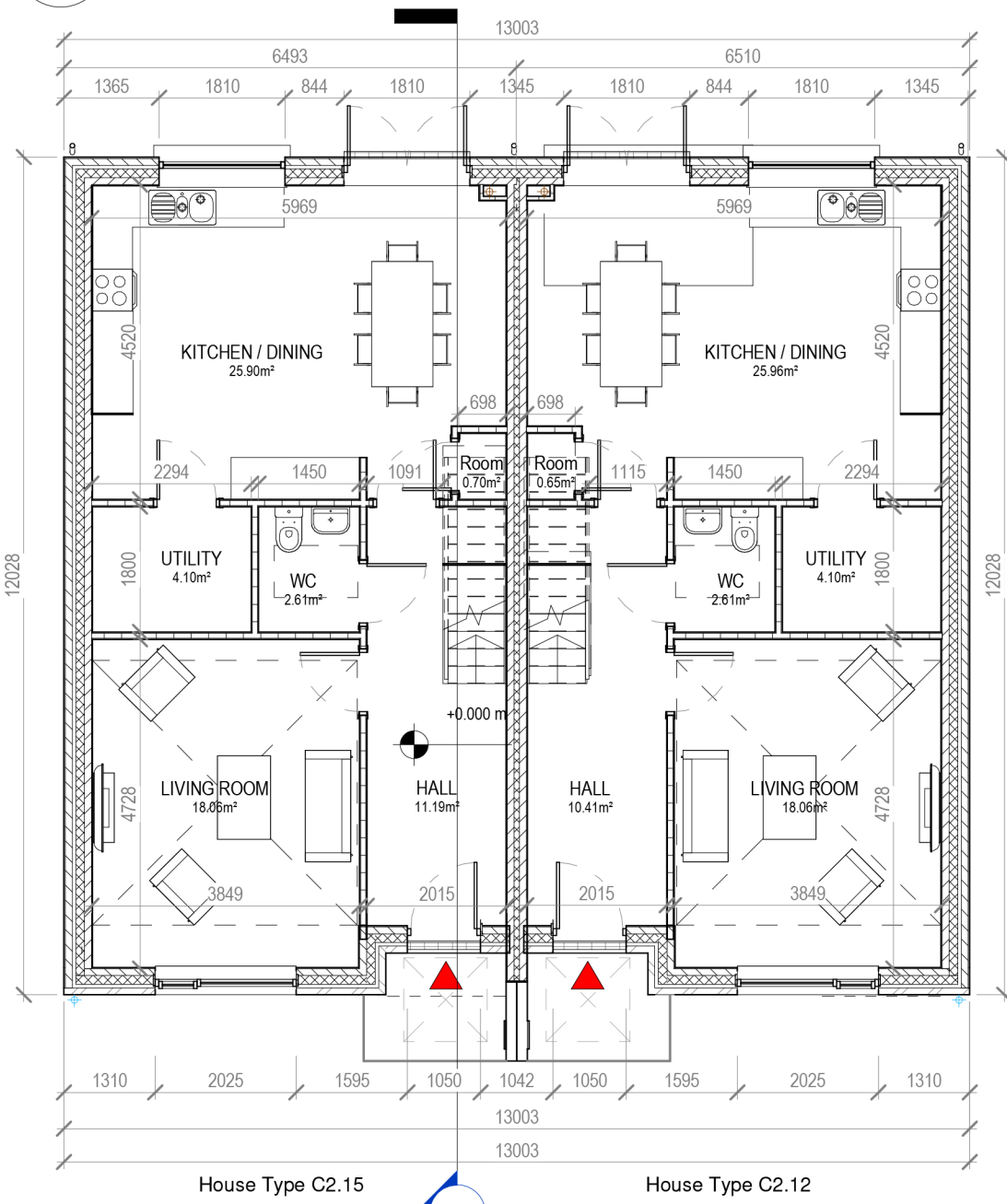
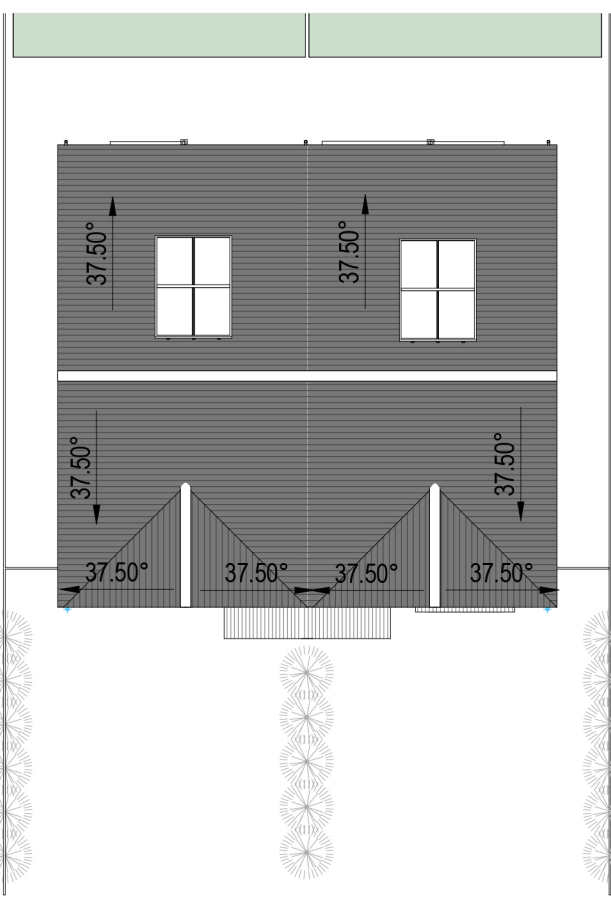


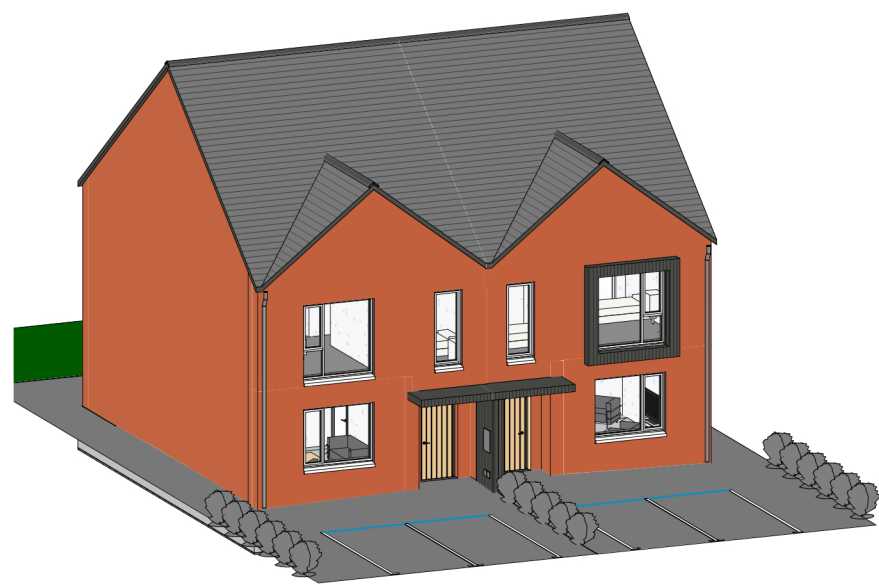
2 Block 7.3 - First Floor Plan
1 : 100



1 Block 7.3 - Ground Floor Plan
1 : 100



8 Block 7.3 - Roof Plan
1 : 200



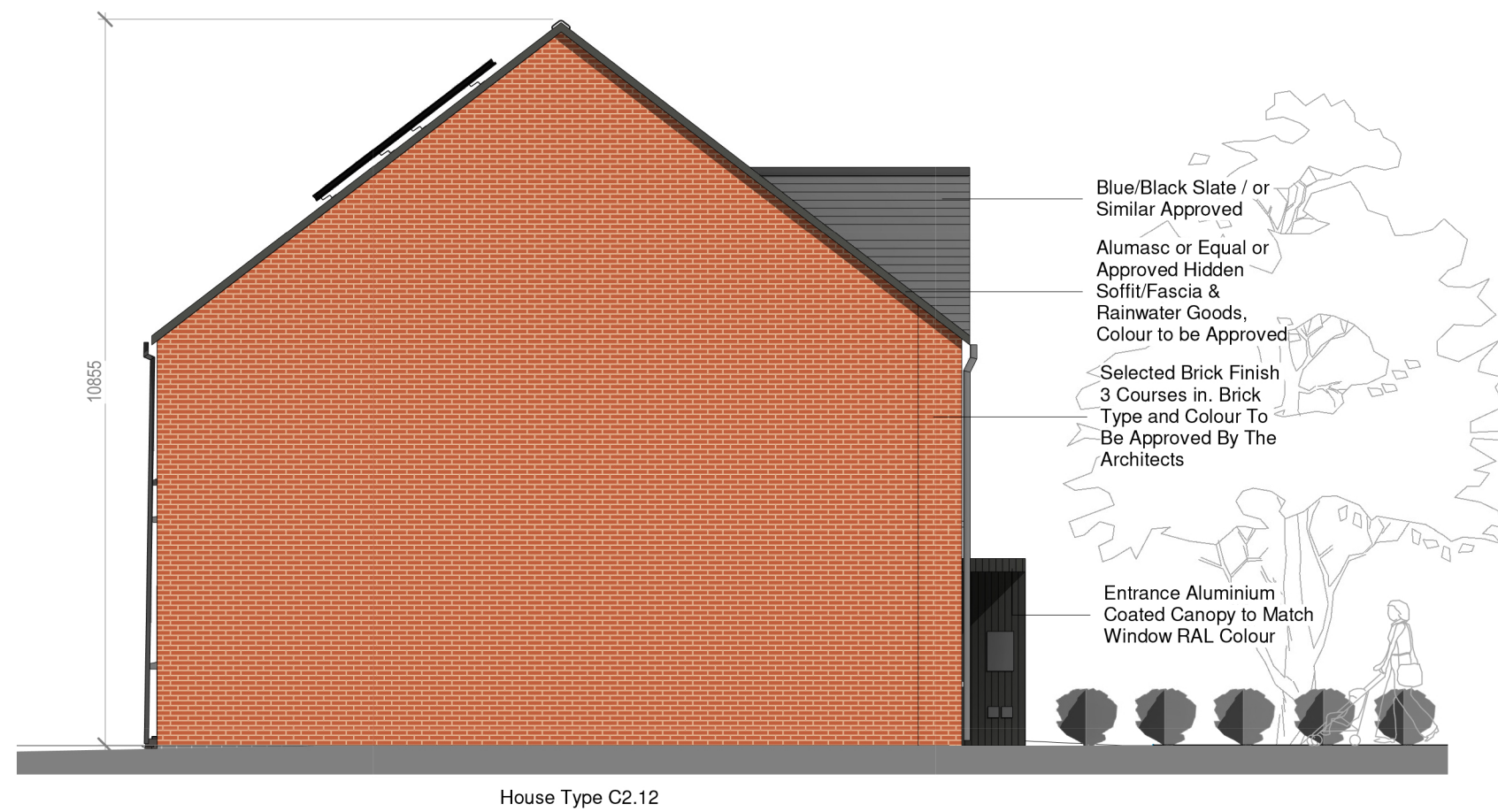
9 Block 7.3 - 3D View



3 Block 7.3 - Front Elevation
1 : 100



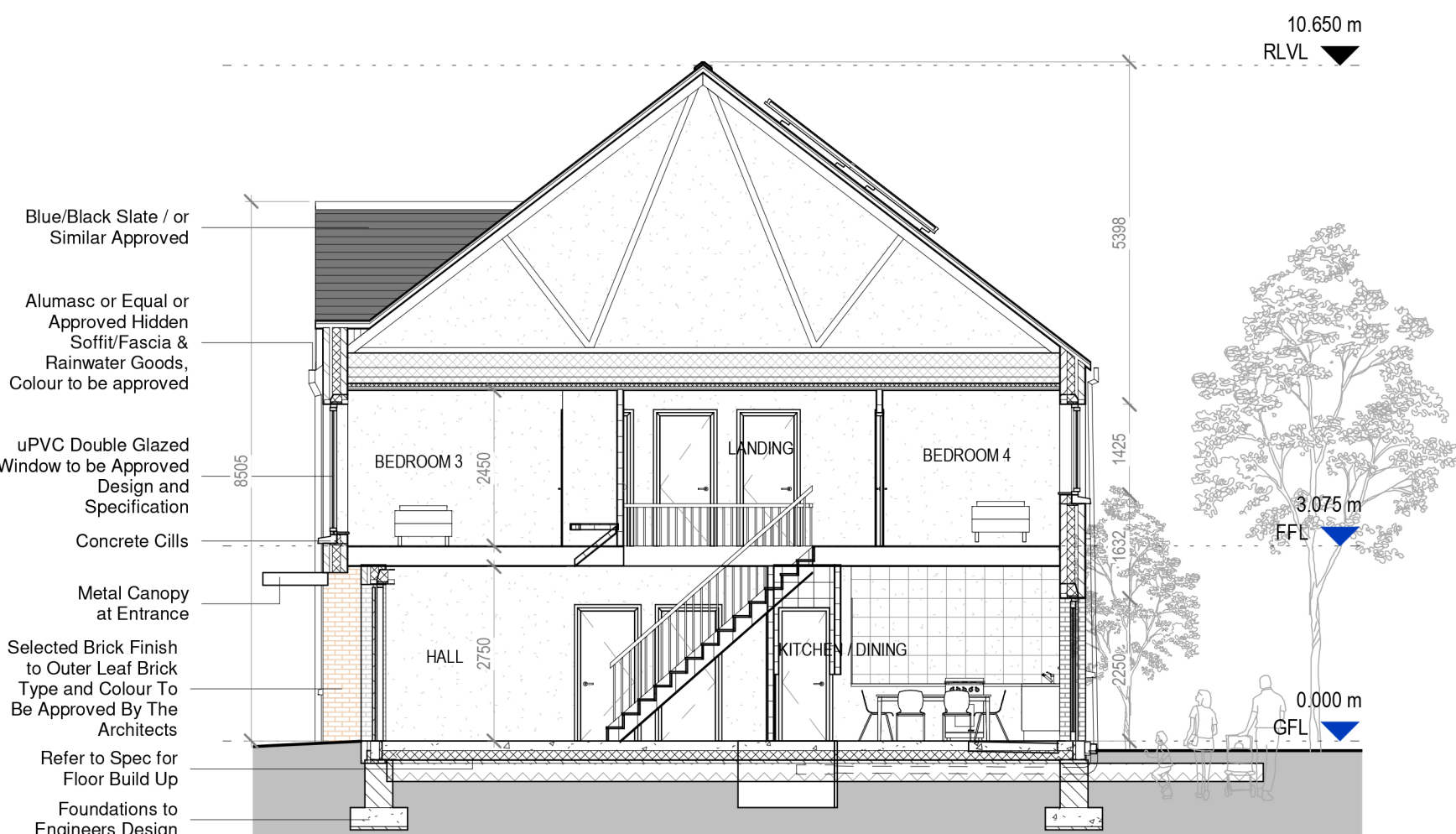
4 Block 7.3 - Rear Elevation
1 : 100



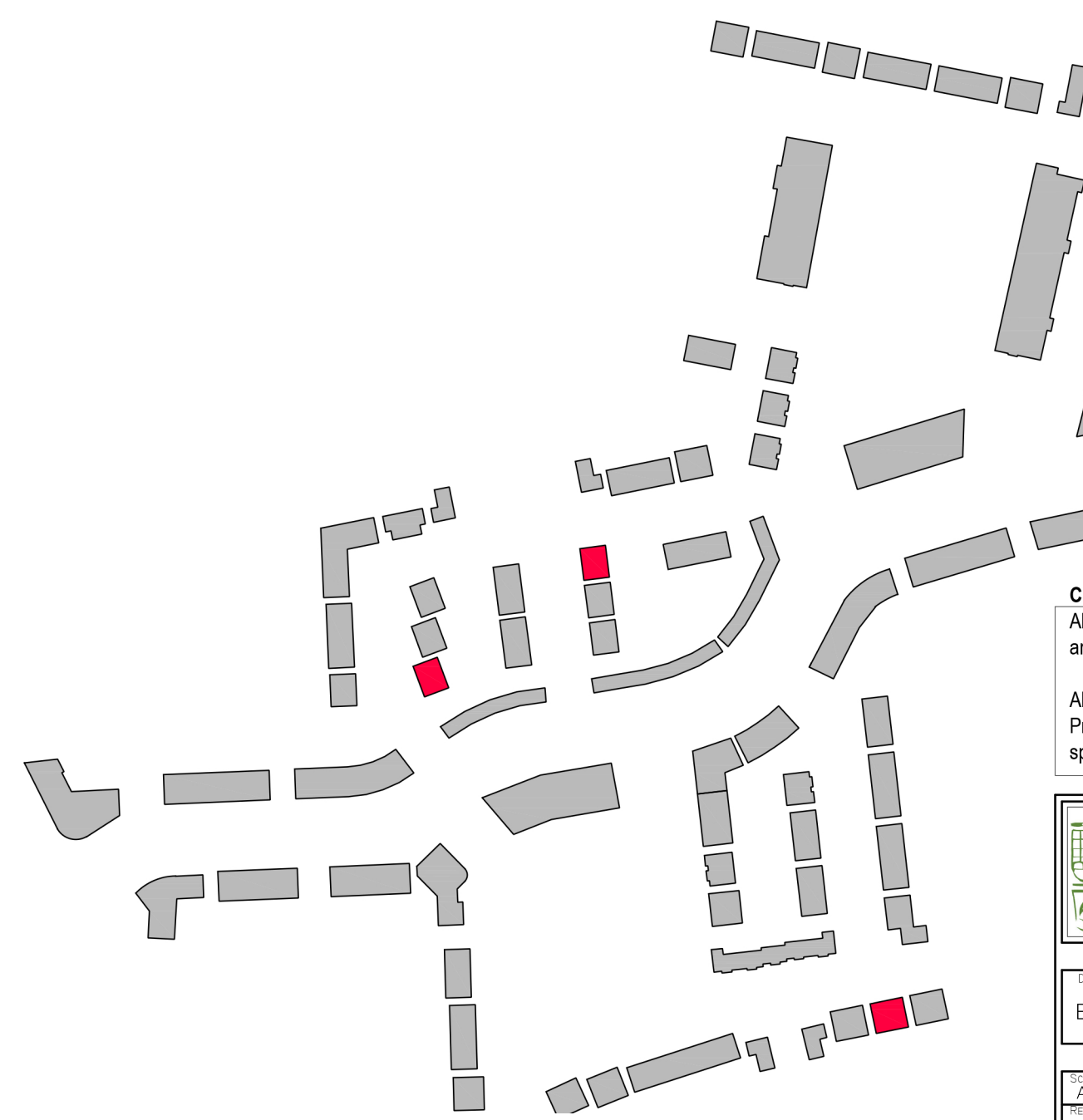
5 Block 7.3 - Side Elevation 1
1 : 100



6 Block 7.3 - Side Elevation 2
1 : 100



7 Section A-A
1 : 100



NOTE:
Levels shown on architectural block plans relate to local Ground Floor Level and do not relate to Ordnance Datum.
For Finished Ground Floor Levels related to Ordnance Datum see DBFL Engineers drawings numbered: 180002-2000 Roads Layout / 180002-2001 Roads Layout Sheet 1 / 180002-2002 Roads Layout Sheet 2

CPR Note:
All works to be carried out using proper materials which are fit for the use they are intended and for the condition in which they are to be used.
All materials used in connection with the works to comply with the Construction Products Regulation (EU) No. 305/2011 and the harmonised technical specification/standards that fall within the remit of the CPR No. 305/2011



DRAWING TITLE			
BLOCK 7.3 - UNITS C2.15 / C2.12 PLANS, ELEVATIONS & SECTION			
SCALE	AS INDICATED	DRAWING NUMBER	1757-PA-BL73-100
REVISION	AI	DATE	17/07/2021
BY	DW	DATE	OCTOBER 2021

PLEASE NOTE:
Minimum unobstructed living room width 3.8m.
Main bedroom area 13m2, Double room 11.4m2 (2.8m minimum width), Single 7.1m2 (2.1m minimum width)